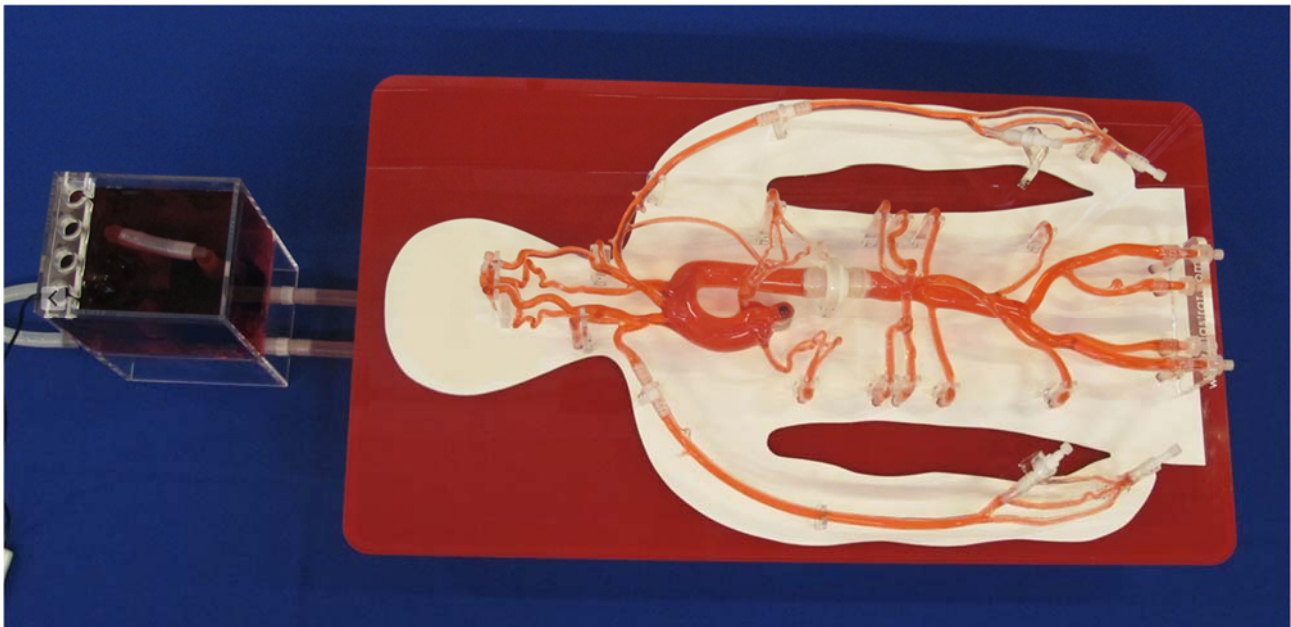




Half Body model HB-S-N-050

containing part of Head arteries, Thoracic and Abdominal arteries

Reference: Thorax: T-S-N-002-v2+, Abdominal: A-S-N-003+ a 6 liters tank
The colours of this model (red, white) can be changed and made available to your company colours.



Elastrat in-vitro models respect human anatomy and are designed for education, development of stents, coils, and catheters. They provide a realistic environment for the simulation of endovascular procedures, pre-surgery trainings, studies, and teaching purposes for interventionists. The in vitro model's transparency to light makes them suitable for video photographic monitoring.

Swiss Quality Models manufactured by Elastrat in Geneva, Switzerland. These delivered models are Elastrat's Trademark deposited models.

The Elastrat team wishes you nice trainings with this model.