

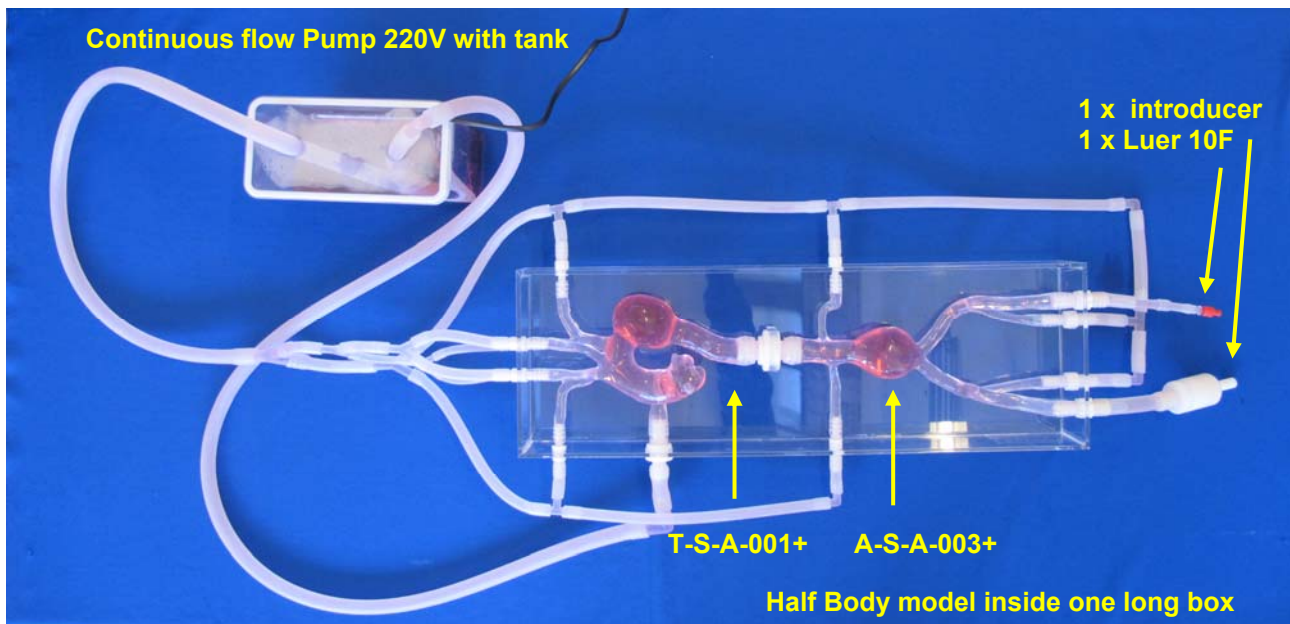


HALF BODY model

Ref: HB-S-012+ working in a closed water circulation

Soft silicone model in two pieces (Abdominal and Thoracic),

integrated in one long transparent box



Compact continuous flow pump available in 220V or 110V.

Swiss Quality Models manufactured by Elastrat in Geneva, Switzerland

These delivered models are Elastrat's Trademark deposited models

Geneva, 2022