

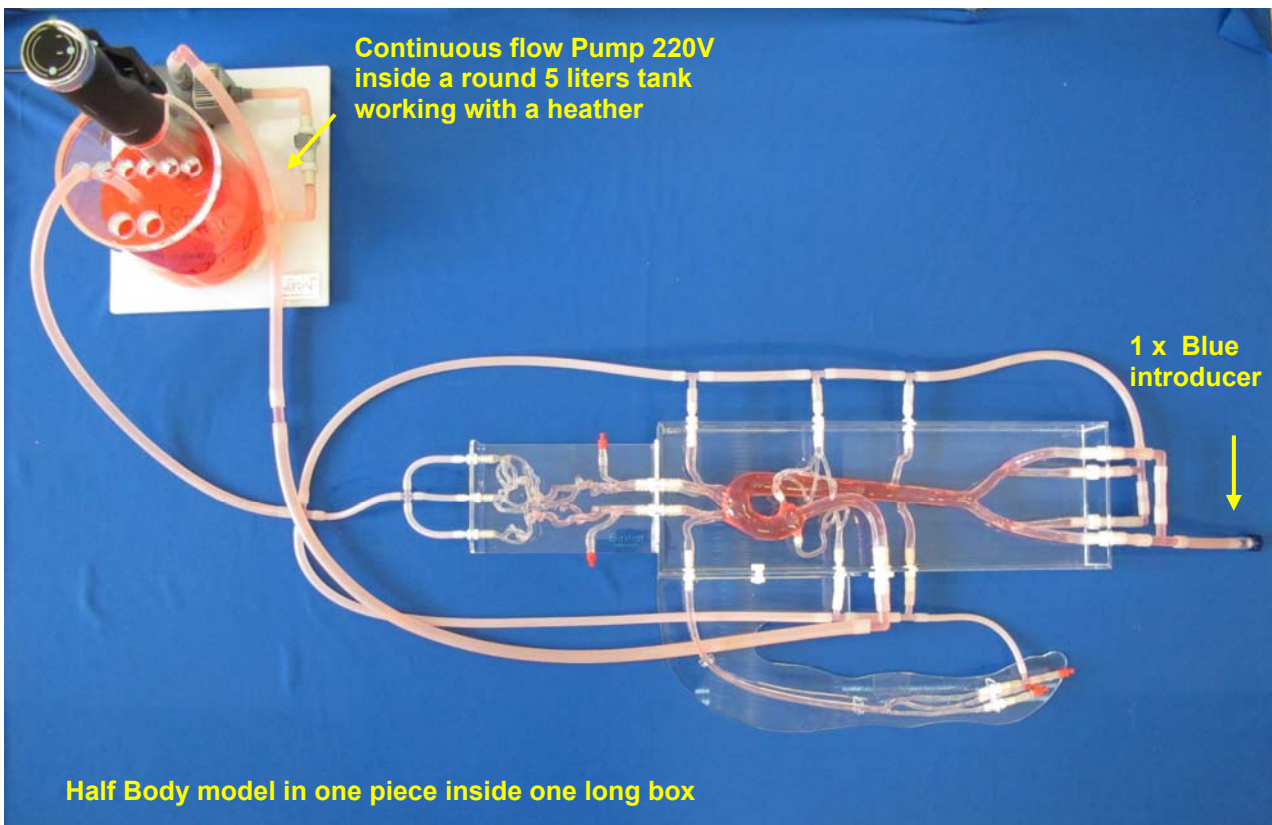


## **HALF BODY model**

**Ref: HB-S-Arm-014+TP working in a closed water circulation**

Soft silicone model in one piece integrated in one long transparent box (Abdominal with iliacs and Thoracic with exchangeable coronaires) with entry at 3-cusp.

A Head model with both carotids is added which can be exchanged and a Right Arm



Compact continuous flow pump available in 220V or 110V.

**Swiss Quality Models manufactured by Elastrat in Geneva, Switzerland**  
**These delivered models are Elastrat's Trademark deposited models**

Geneva, 2022