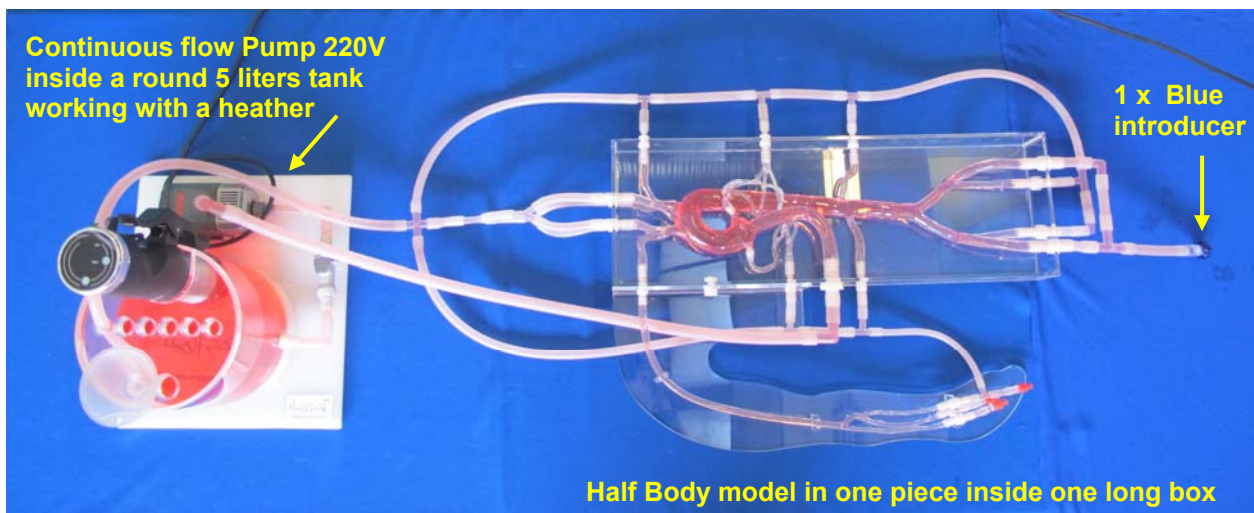




HALF BODY model

Ref: HB-S-Arm-015+TP working in a closed water circulation

Soft silicone model in one piece integrated in one long transparent box (Abdominal with iliacs and Thoracic with exchangeable coronaires) with entry at 3-cusp, with add of Right Arm



Compact continuous flow pump available in 220V or 110V.

Swiss Quality Models manufactured by Elastrat in Geneva, Switzerland

These delivered models are Elastrat's Trademark deposited models

Geneva, 2022