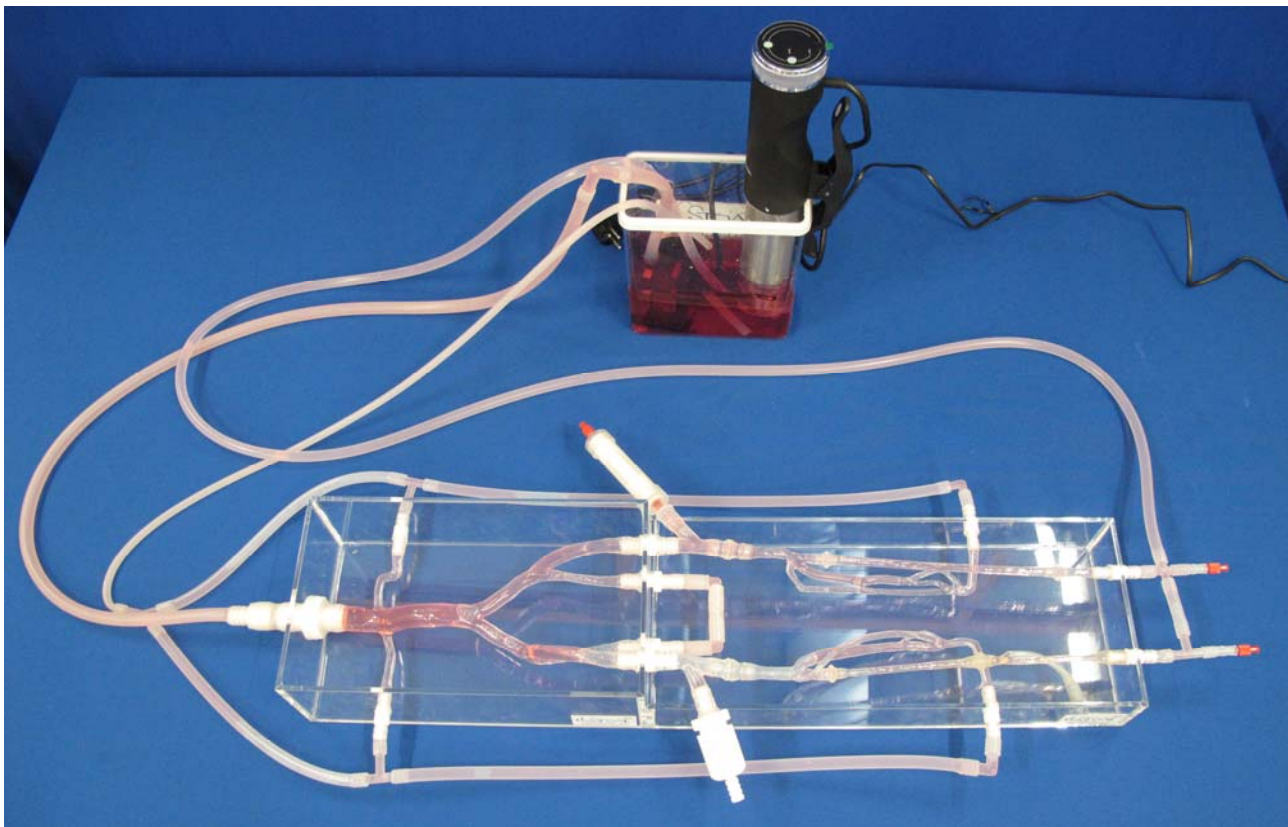




LEGS model with femorals Reference: LGFM-S-NB-003+

Should you need the complete LEGS model with the tibials = Ref LG-S-NB-003+
Here under model developed to work in a closed water circuit with heater.
The femorals have inserts with various ID. Interesting to deploy and retrieve stents.



ELASTRAT's in vitro models respect human anatomy and are designed for the development and demonstration of stents, coils, and catheters. They provide a realistic environment for the simulation of endovascular procedures, pre-surgery training, studies, and teaching purposes for interventionists.

Elastrat replicas are compatible with modern imaging modalities such as digital subtraction angiography, computed tomography, and magnetic resonance imaging. Providing the use of an adequate circulating fluid, Doppler techniques can also be performed. The in vitro model's transparency to light makes them suitable for video and photographic monitoring.

Elastrat's Anatomical models are moulded from organ donators or acquired from scanned bodies

Swiss Quality Models hand made in Geneva