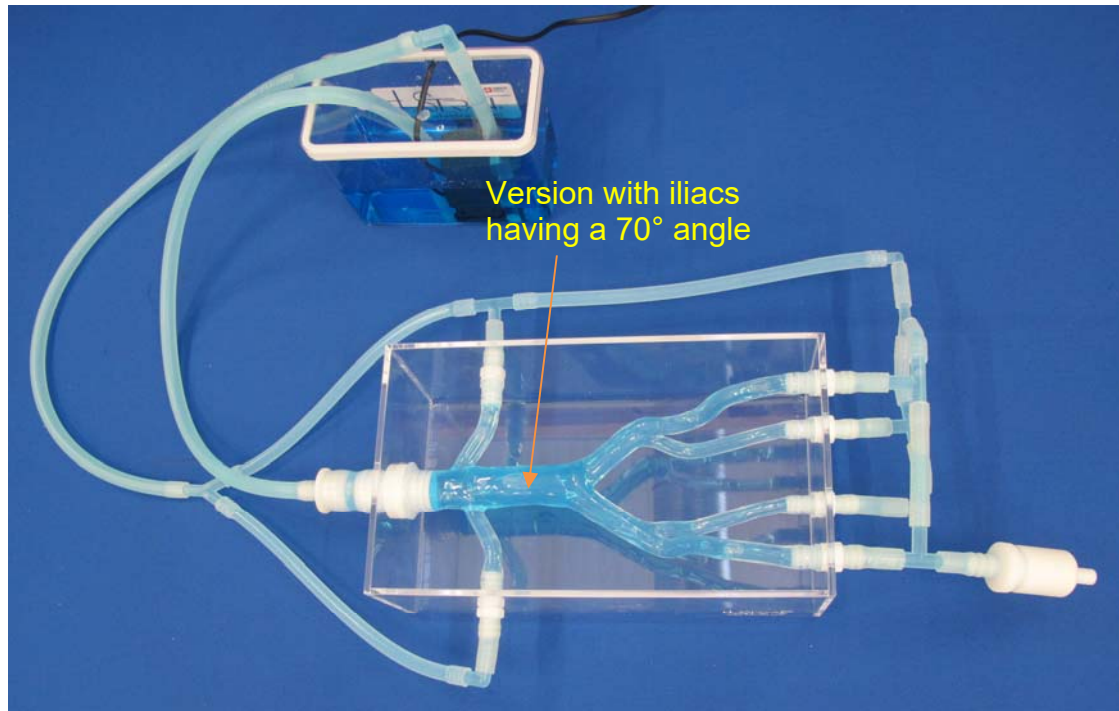
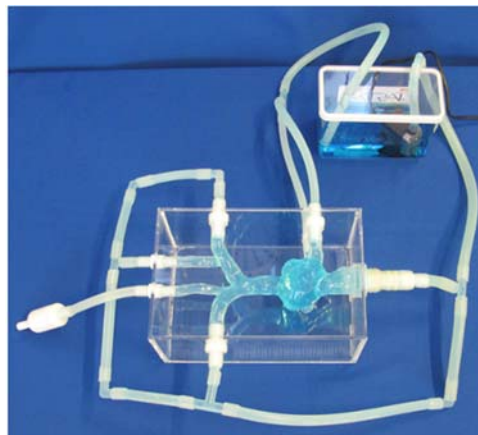




## Venous abdominal model reference V-A-S-N-020+ with a 70° iliac angle, in a closed water circulation



This model can be connected to our venous Heart model: Ref V-T-S-N-001+



ELASTRAT's in vitro models respect human anatomy and are designed for the development and demonstration of stents, coils and catheters.

They provide a realistic environment for the simulation of endovascular procedures, pre-surgery training, studies, and teaching purposes for interventionists.