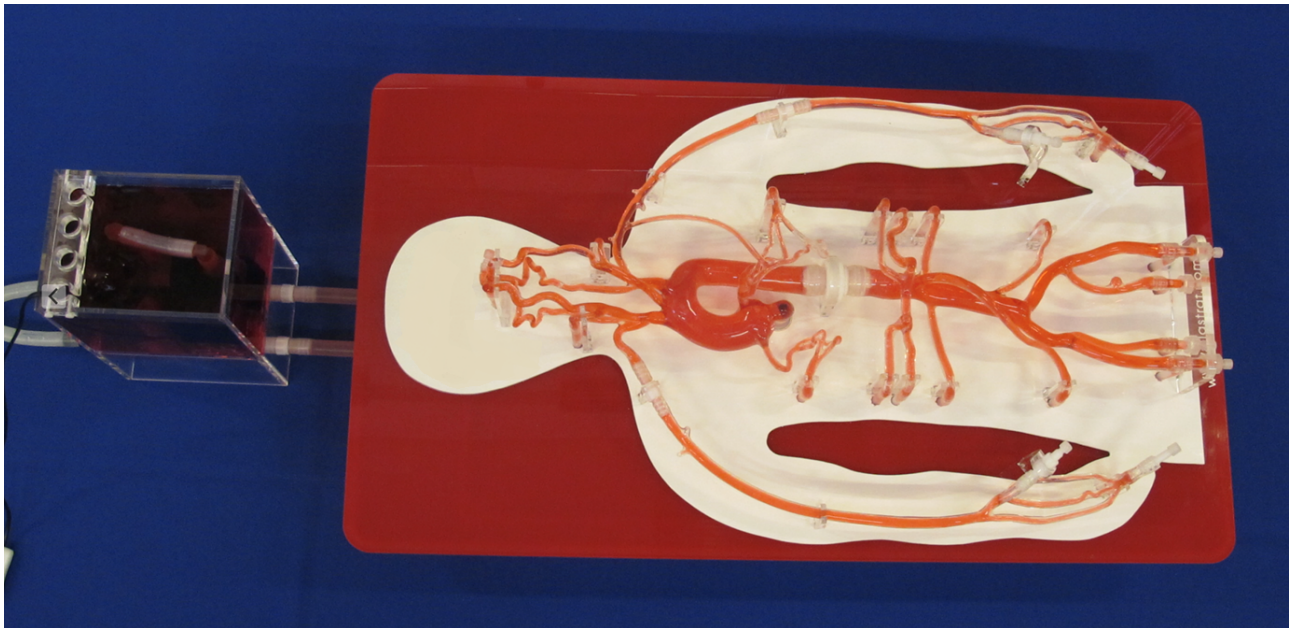




## ½ Body model

### containing part of Head arteries, Thoracic and Abdominal arteries

Reference: Thorax: T-S-N-002-v2+, Abdominal: A-S-N-003+ a 6 liters tank  
The colours of this model (red, white) can be changed and made available to your company colours.



Elastrat in-vitro models respect human anatomy and are designed for education, development of stents, coils, and catheters.  
They provide a realistic environment for the simulation of endovascular procedures, pre-surgery trainings, studies, and teaching purposes for interventionists.  
The in vitro model's transparency to light makes them suitable for video photographic monitoring.

**Swiss Quality Models manufactured by Elastrat in Geneva, Switzerland.  
These delivered models are Elastrat's Trademark deposited models.**

The Elastrat team wishes you nice trainings with this model.